

## Pre-SPR EEGLAB Workshop – Portland OR, 2010

**8:30 Welcome & brief EEGLAB overview (Scott, Arno)**

9:00 Separating sources: ICA/Amica (Arno)

9:30 Seeing the data: Trial-by-trial Visualization using erpimage() (Julie)

10:00 Separating modes: Event-related time/frequency analysis (Scott)

**10:30 Questions & Break**

11:00 Separating modes: Event-related time/frequency analysis (Julie)

11:30 Comparing sources across subjects and conditions: IC clustering (Arno)

**12:00 Worked examples (Scott) ←**

**12:15 Lunch Break**

2:00 Neuroelectromagnetic forward head and inverse source modeling (Scott)

2:30 Modeling distributed brain dynamics: Information flow analysis (Tim)

3:00 Using EEG: Scientific brain-computer interface (BCI) design and neurofeedback (Christian, Julie)

**3:45 Tea/Coffee break**

4:00 What's next? Imaging coordinated brain and body dynamics (Scott)

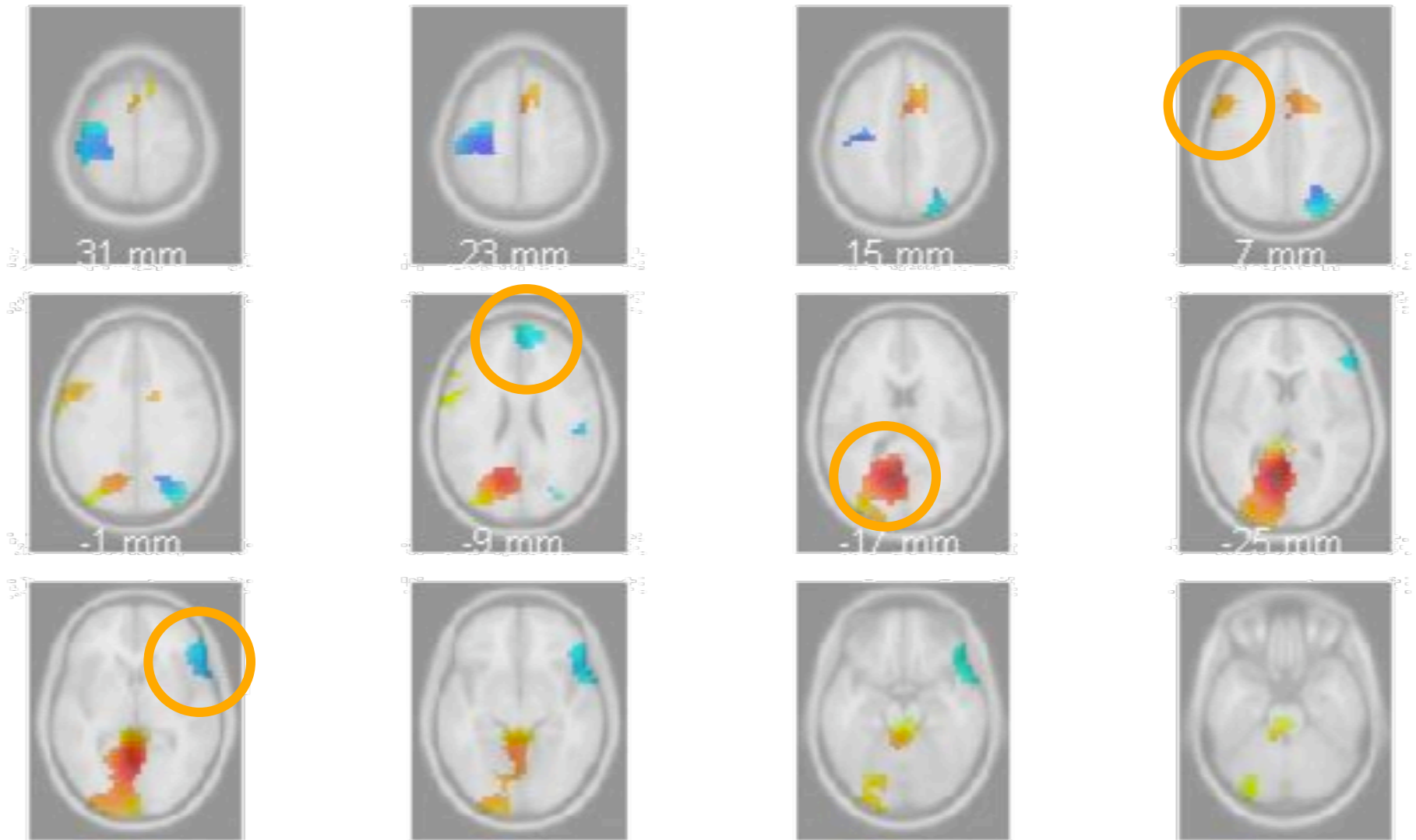
4:30 Discussion (all)

**5:00 Close**

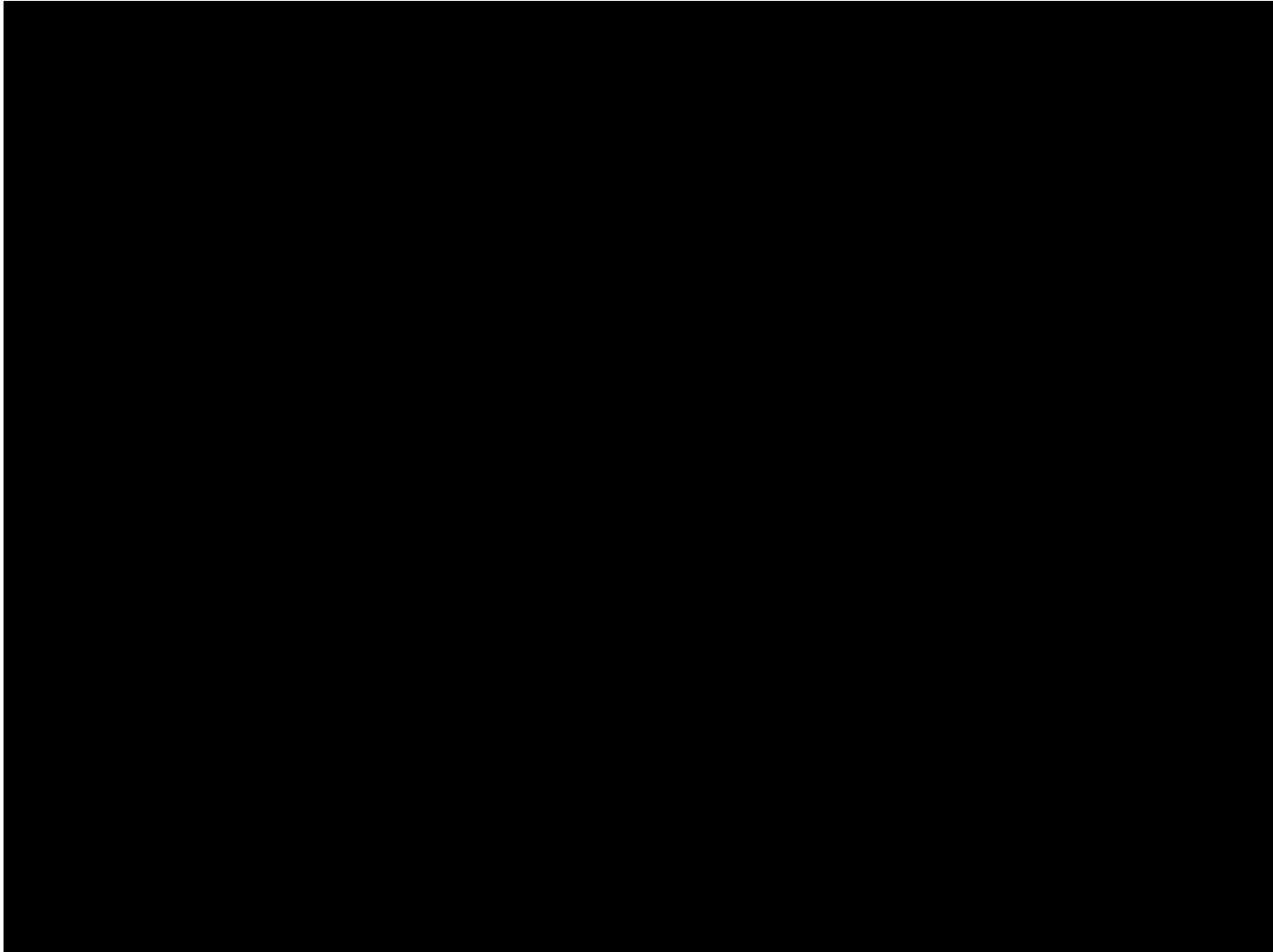
# Visual spatial working memory in young and older adults



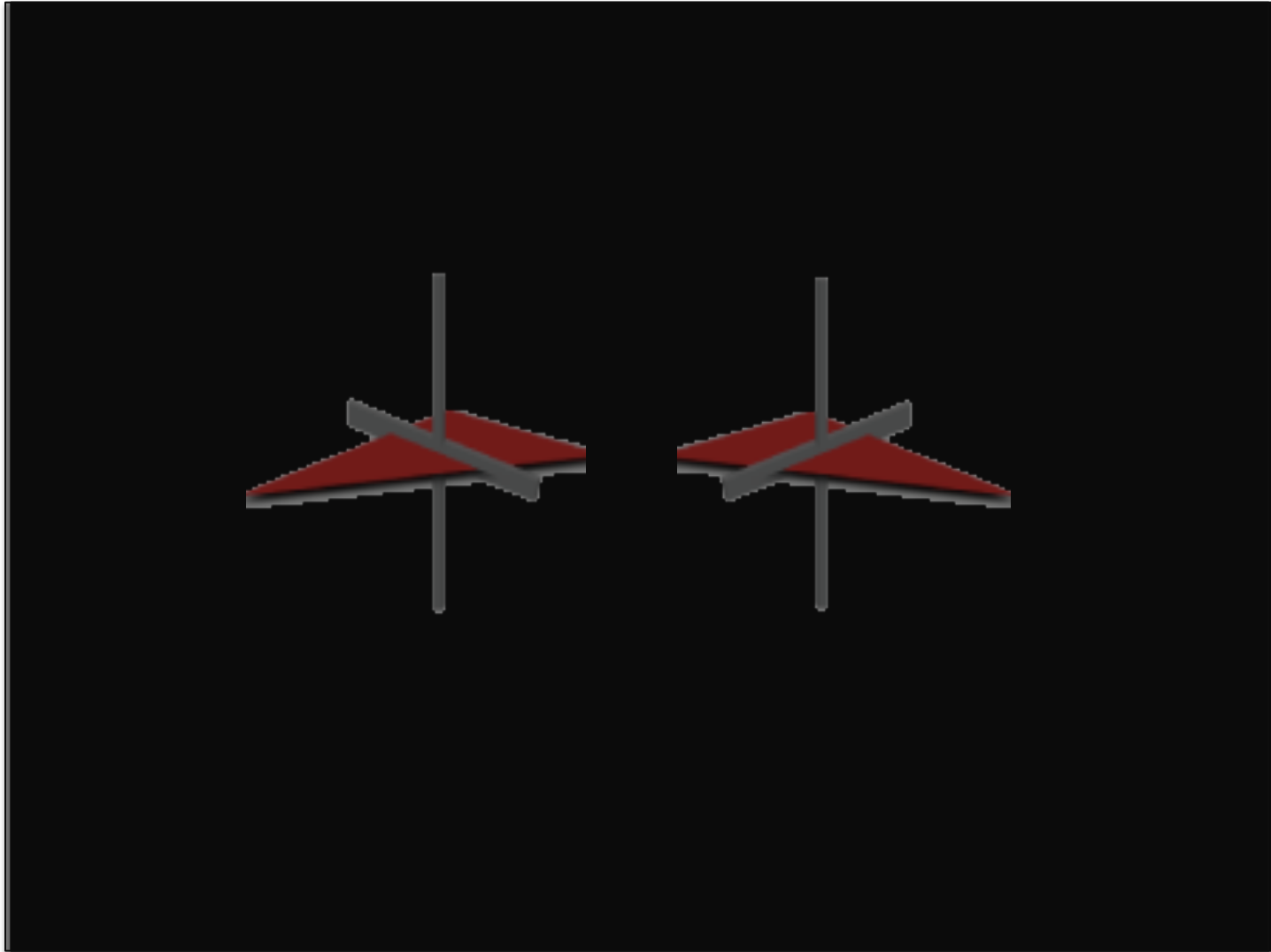
## Young adults – Older adults



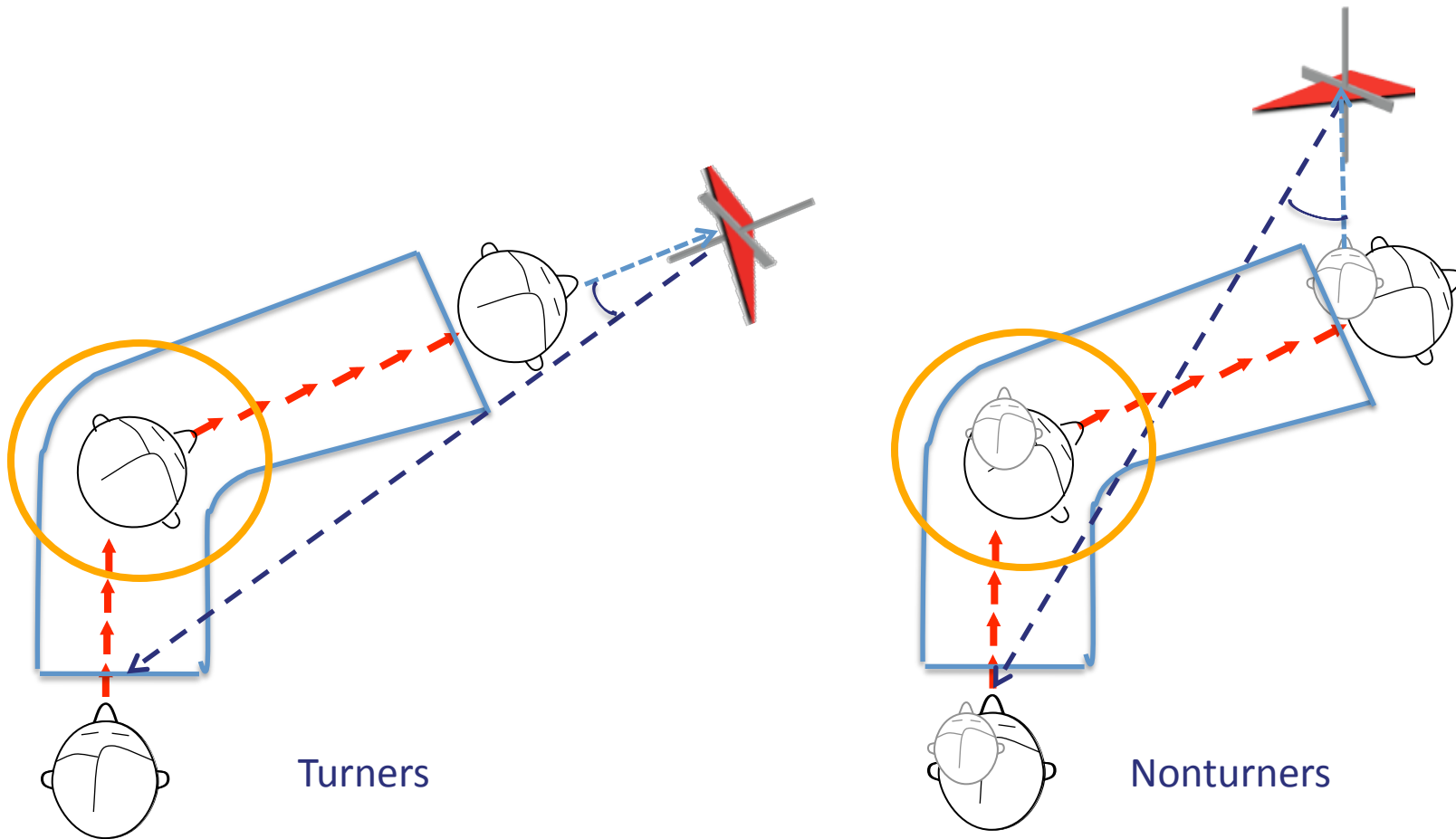
# A Passive Spatial Navigation Paradigm



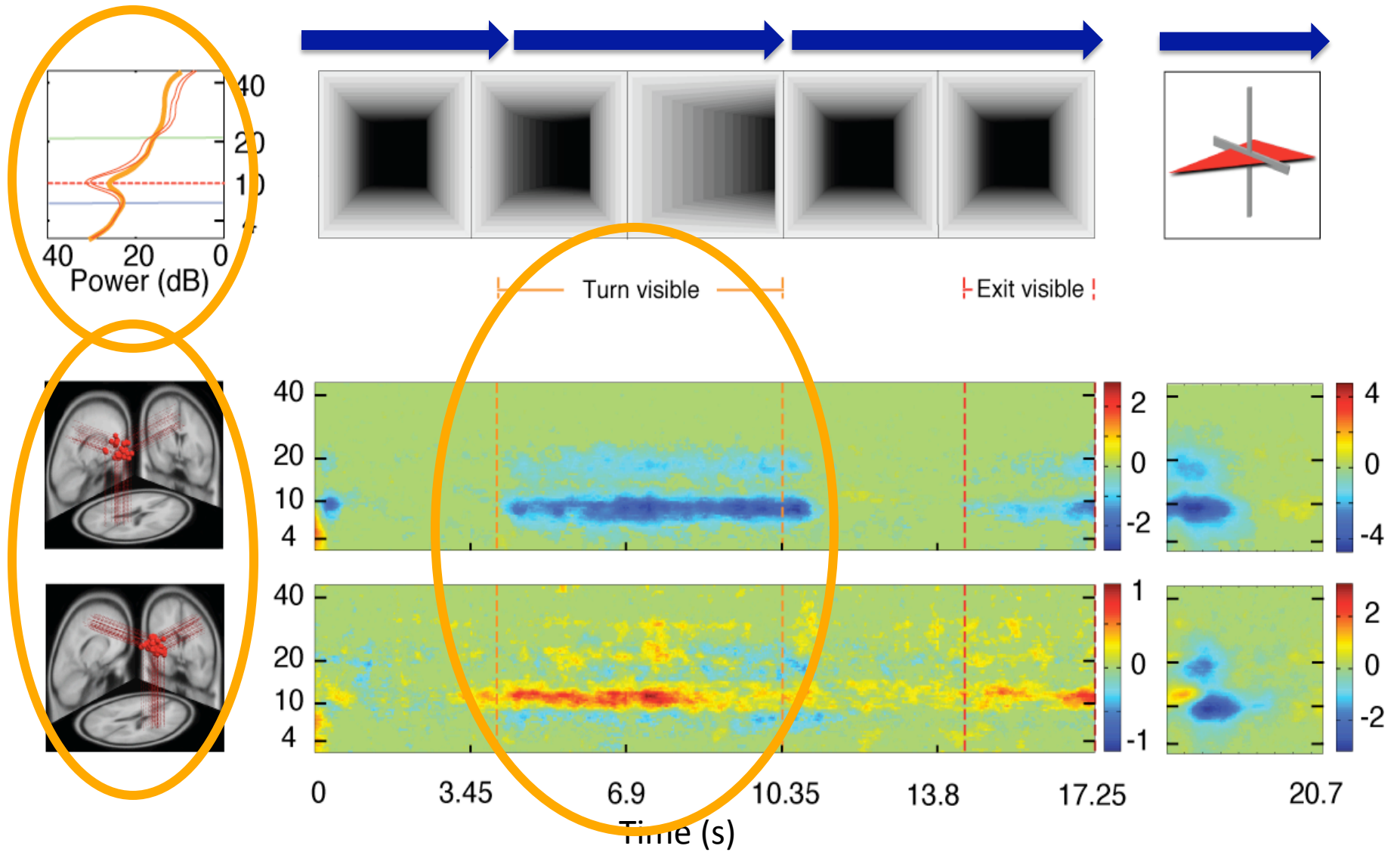
# A Passive Spatial Navigation Paradigm



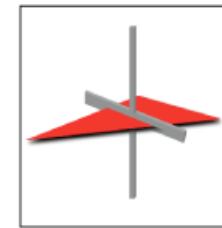
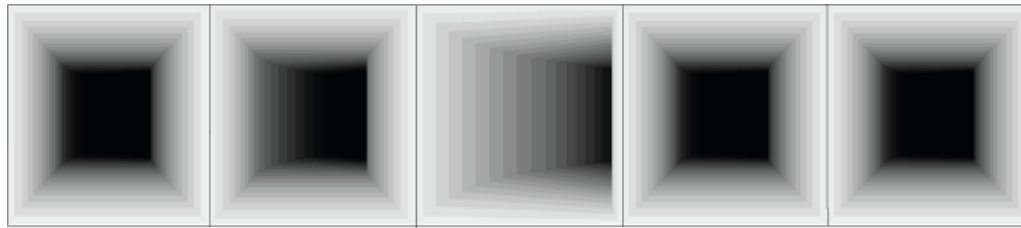
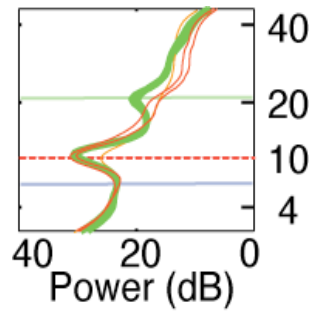
# 'Turner' and 'Nonturner' subjects use different spatial orienting styles



# Parietal component clusters

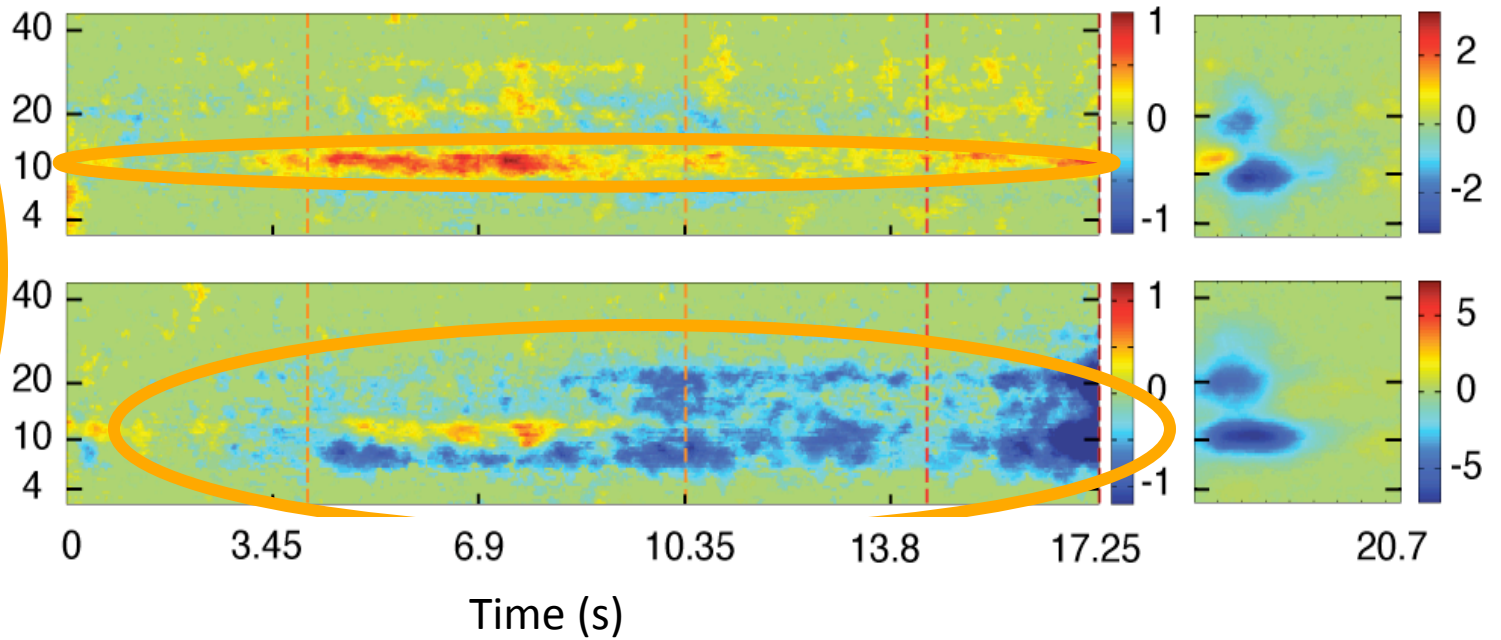
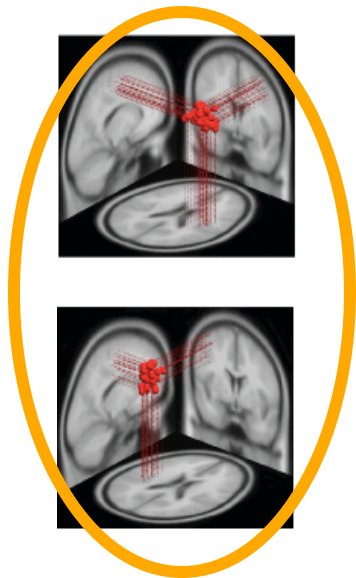


# Pre-motor component clusters



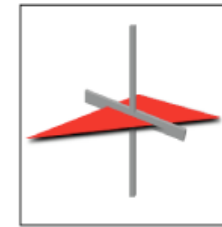
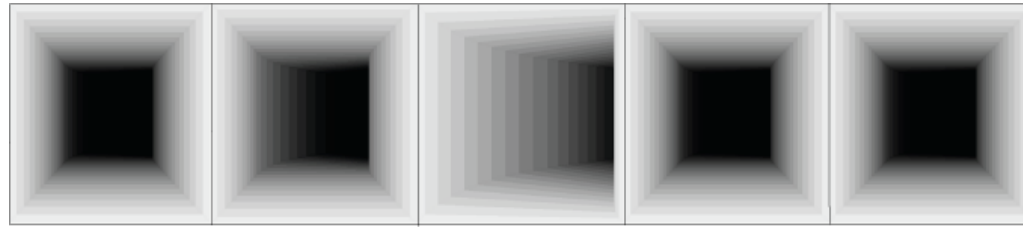
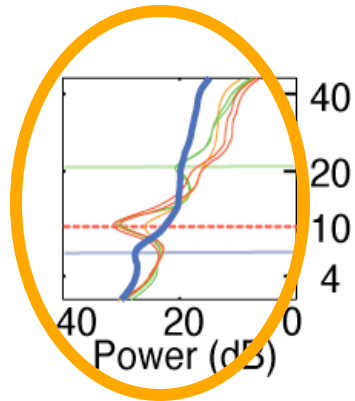
Turn visible

Exit visible



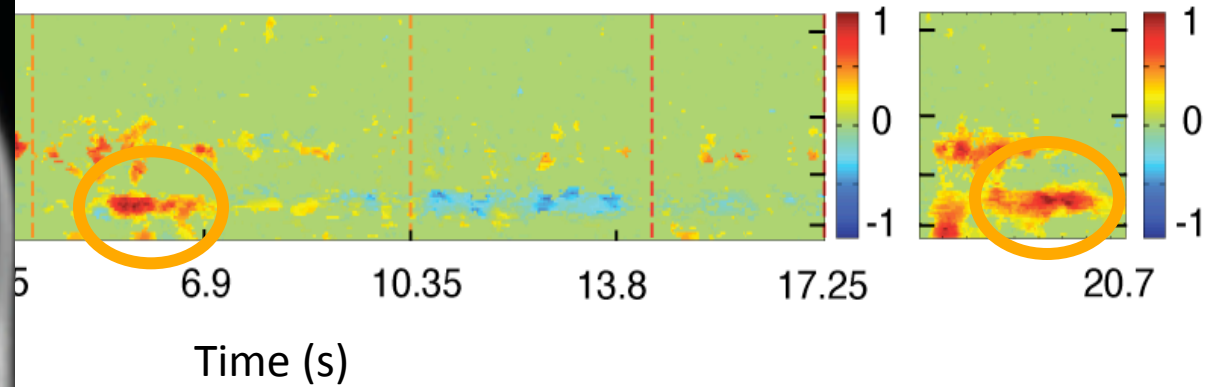
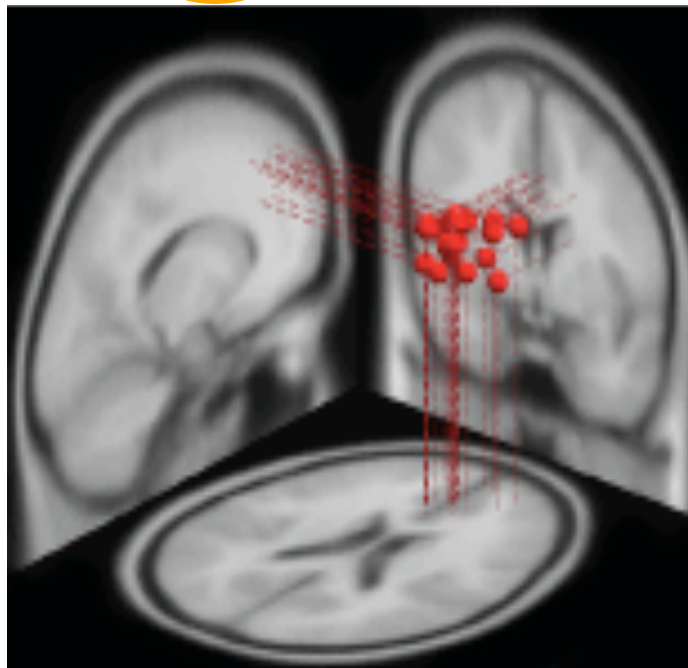


# Medial prefrontal component clusters



Turn visible

Exit visible



# Clusters distinguishing Turners & Nonturners

