

Measuring Steady-State Visual Evoked Potentials from Non-hair-bearing Areas

Yu-Te Wang, Yijun Wang, *Member, IEEE*, Chen-Kuan Cheng, *Fellow, IEEE*,
and Tzyy-Ping Jung*, *Senior Member, IEEE*

Abstract— Steady-State Visual Evoked Potential (SSVEP)-based Brain-Computer Interface (BCI) applications have been widely applied in recent years. Many studies have shown that the best locations to acquire SSVEPs were from the occipital areas of the scalp. Because the non-hair-bearing scalp regions are always more accessible to all different types of EEG sensors, this study systematically and quantitatively investigated the feasibility of measuring SSVEPs from non-hair-bearing regions, compared to those measured from the occipital areas. Empirical results showed that the signal quality of the SSVEPs from non-hair-bearing areas was comparable with, if not better than, that measured from hair-covered occipital areas. These results might significantly improve the practicality of a BCI system in real-life applications; especially used in conjunction with newly available dry EEG sensors.

I. INTRODUCTION

Steady-State Visual Evoked Potential (SSVEP) is the electrical response of the brain to flickering visual stimuli. SSVEP-based brain-computer Interface (BCI) recently has been widely used in many applications due to its advantages such as little user training and high information transfer rate [1]-[9]. For example, Gao et al. [8] applied the SSVEP to the control of electric apparatus that featured noninvasive signal recording, little training requirement, and a high information transfer rate. As a result, more and more studies have explored potential applications of this technology.

In most EEG studies, wet-gel based electrodes were the first choice to obtain high signal-to-noise ratio (SNR) EEG data from the scalp. As SSVEPs are pre-dominantly originated from the visual cortex, it seems natural to collect the signals by placing electrodes over the occipital regions. Some studies even performed an off-line pilot experiment to obtain the optimal electrode locations prior to on-line BCI practices. However, no matter how people perform the EEG recording from hair-covered areas, they suffered from the complications of recording such as long preparation time, requiring a technician to prepare the electrodes and insufficient skin-electrode contact area due to the hair. These

complications make BCI impractical for routine use in daily life. To overcome these problems, dry contact- and non-contact-type EEG sensors have been developed to enable user-friendly EEG measurements to improve the usability of BCIs [10]-[13]. However, a major concern over the use of dry electrodes for EEG measurement is that the SNR of the acquired signals might not as good as that from the gel based electrodes [10]-[13]. Therefore, an alternative approach to easily extract high quality SSVEPs becomes a crucial issue in BCI community.

The topography of SSVEP often shows a widespread scalp distribution because the SSVEP mainly projected from the visual cortex to the occipital areas, neck, forehead or even the face areas. Therefore, it's reasonable to believe that one could measure the SSVEP over non-hair-bearing areas. To our best knowledge, no study has yet systematically and quantitatively compared SSVEPs from different scalp and face locations using high-density EEG data. This study aims to answer two main questions: (1) Can SSVEP be measured from non-hair-bearing areas? What is the quality of the signals compared against that from the hair-covered area? (2) How many channels of non-hair-bearing SSVEP data would be needed to archive the same SNR measured from the occipital areas in SSVEP experiments? If the proposed non-hair-bearing montage approves feasible, the practicality of an SSVEP BCI system can be significantly improved, especially used in conjunction with dry EEG sensors such as non-contact [11] or polymer based electrodes [12].

II. METHODS

A. Stimuli and Procedure

The visual stimulus was a 5×5 cm square coded and rendered at the center of a 21" CRT monitor with a 120Hz refresh rate. The stimulus frequencies ranged from 9Hz to 13Hz with an interval of 1Hz. In general, this cannot be implemented with a fixed rate of black/white flickering pattern due to a limited refresh rate of a LCD screen. Wang et al. [14] developed a method that approximates target frequencies of SSVEP BCI with variable black/white reversing intervals. Based on this approach, any stimulus frequency up to half of the refresh rate of the screen can be realized. The stimulus program was developed in Microsoft Visual C++ using the Microsoft DirectX 9.0 framework and rendered on Windows XP platform.

Subjects were seated in a comfortable chair in front of the monitor. A chin rest was used to fix the head 35 cm from the screen. The experiment consisted of four sessions, each including five 30s-long trials for the five different stimulus frequencies, which were randomly presented. Subjects were

*Research is supported in part by US Office of Naval Research, Army Research Office (W911NF-09-1-0510), Army Research Laboratory (W911NF-10-2-0022), and DARPA (DARPA/USDI D11PC20183).

Y. -T. Wang and C. K. Cheng are with Computer Science and Engineering Department, University of California San Diego (UCSD), San Diego, CA, USA (e-mail: ytwang@ucsd.edu and ckcheng@ucsd.edu).

Y. Wang and *T. -P. Jung are with Swartz Center for Computational Neuroscience, Institute for Neural Computation, and Center for Advanced Neurological Engineering, Institute of Engineering in Medicine, UCSD, San Diego, CA, USA (e-mail: yijun@scn.ucsd.edu, jung@scn.ucsd.edu; phone: 858-822-7555; fax: 858-822-7556).

asked to gaze on the flickering stimulus for 30 seconds and then take a ~15s rest after each trial in order to avoid visual fatigue caused by flickering. There was a several-minute break between two sessions.

B. Data Acquisition

Five healthy male subjects with normal or corrected to normal vision participated in this experiment. All participants were asked to read and sign an informed consent form approved by the UCSD Human Research Protections Program before participating in the study.

EEG data were recorded using Ag/AgCl electrodes from 256 locations distributed over the entire head using a BioSemi ActiveTwo EEG system (Biosemi, Inc.). Fig. 1 shows the 256-channel cap that covers not only the brain areas, but also the non-hair-bearing areas including the forehead, face, behind-the-ear, and neck areas. Eye movements were monitored by additional bipolar horizontal and vertical EOG electrodes. Electrode locations were measured with a 3-D digitizer system (Polhemus, Inc.). All signals were amplified and digitized at a sample rate of 2,048 Hz. All electrodes were with reference to the nasion.

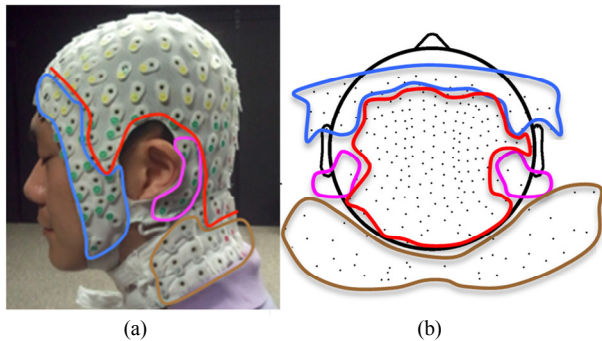


Figure 1. Placement of recording electrodes. (a) A subject wearing the 256-channel electrode cap. The red line roughly represents the boundaries between the hair and non-hair-bearing areas of the subject. Blue, magenta and brown circles represent the electrodes located at the forehead/face, behind-the-ear, and neck areas, respectively. (b) Top view of the distribution of the scalp electrodes.

C. EEG Data Pre-processing

The 256-channel EEG data were first down-sampled to 256Hz. For each trial, six 4s-long EEG epochs were extracted according to event codes generated by the stimulus program [14]. For each stimulus frequency, the epochs from the four sessions were put together to form a dataset of 24 epochs. Epochs with significant artifacts (such as movement artifacts and eye blinks) were manually removed from the dataset. To remove the spontaneous EEG activities, the remaining epochs were averaged to obtain the multi-channel SSVEP signals.

D. EEG Data Analyzing

1) Signal-to-noise ratio (SNR)

This study used SNR to evaluate the quality of SSVEPs. Fast Fourier Transform (FFT) was used to calculate the amplitude spectrum of the 4s-long EEG data (i.e., $y=|FFT(x)|$). The frequency resolution of the resulting amplitude spectrum was 0.25Hz. The SNR was defined as the ratio of the amplitude of the SSVEP (at the stimulating frequency) to the mean amplitude of the background noise

(within the frequency band of 8-15Hz, which includes 28 frequency samples)

$$SNR = \frac{28 \times y(f)}{\sum_{k=8}^{15} y(k) - y(f)} \quad (1)$$

2) Single-channel evaluation

Since this study aimed to investigate the SNR of SSVEPs recorded at different locations, the SNR values for all electrodes were calculated, sorted, and categorized into four areas as indicated in Fig.1. In each area, the electrode with the highest SNR was selected for comparison. In the hair-covered area, the electrode with the highest SNR should be located in the occipital region. This procedure was applied to all stimulus frequencies.

3) Multi-channel evaluation

The spatial filtering technique has been widely used in EEG signal processing to improve the SNR of the EEG signal. Because the montage covered different non-hair-bearing areas with multiple electrodes at each area, the SNR of SSVEPs could be improved through spatial filtering. In previous studies of SSVEP-based BCIs, the Canonical Correlation Analysis (CCA) algorithm has been proved to be very efficient for improving the SNR of SSVEP signal [2]. CCA can calculate the canonical coefficients for the two different datasets (in this case, EEG dataset and a reference signal set) such that the correlation between the two canonical variables was maximized. The reference signal set is defined as

$$\begin{bmatrix} \sin(2\pi ft) \\ \cos(2\pi ft) \end{bmatrix} \quad (2)$$

where f is the stimulating frequency. In practice, the coefficients for the EEG dataset could be used as spatial filters to compute linear combinations of EEG data from all electrodes. For multi-channel data, the SNR of SSVEPs was calculated using the projection of the multi-channel data (i.e., the canonical variable).

The SNR of the multi-channel data was estimated by calculating the mean SNR of randomly selected combinations of electrodes from the 80 electrodes over the non-hair-bearing areas. The number of selected electrodes ranged from 1 to 80. For each number, the SNR calculation was repeated 1000 times with different electrode combinations. The SNR and electrode positions of the combination with the highest SNR were saved for further comparison.

III. RESULTS

Fig.2 shows the SNR topography and the normalized amplitude spectrum on different head areas for Subject 1 and Subject 5. As expected, the occipital area has the highest SNR of SSVEP signals, indicating that the brain sources might locate at or near the visual cortex. The SNR depended on the distance between the electrode position and the occipital region. As shown in Fig.2 (a) and Fig.2 (b), the SNR decreased at the other brain areas (e.g., the frontal area)

and the non-hair-bearing areas. Although the SNR of SSVEP signals recorded from the non-hair-bearing areas was lower than that recorded from the occipital region, signals acquired from the non-hair-bearing areas still showed a clear frequency response at the stimulating frequency (see Fig.2 (c) and Fig. 2 (d)). This finding confirmed our hypothesis that the SSVEPs might be detectable from EEG recordings measured from the non-hair-bearing areas on the head.

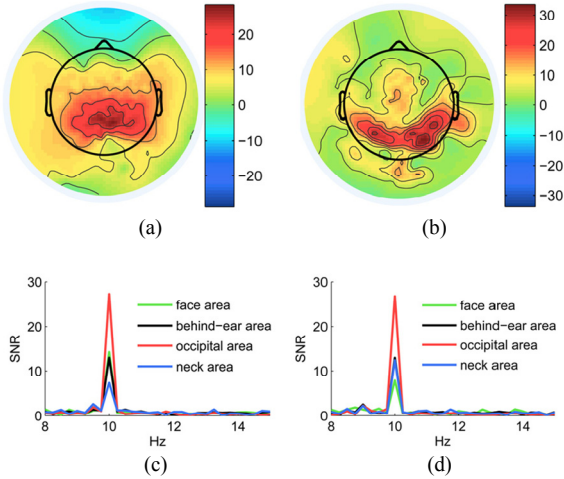


Figure 2. Scalp topography maps of the SNR of SSVEPs at 10 Hz ((a): Subject 1, (b): Subject 5). Single-channel SNR from the occipital and non-hair-bearing areas ((c): Subject 1, (d): Subject 5).

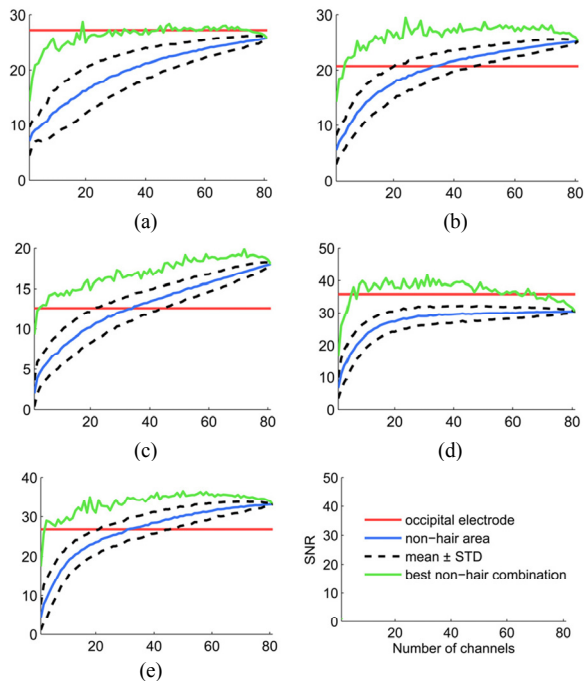


Figure 3. The relationship between the SNR and the number of electrodes used in the CCA processing ((a)-(e) correspond to Subject 1-5). The non-hair-bearing electrodes include those from face, neck, and behind-the-ear areas. The signals measured from the occipital electrodes had the highest SNR.

Fig.3 illustrates the SNR of SSVEP signals contributed by combinations of data from multiple channels from the non-

hair-bearing areas for all subjects. For a single electrode, the occipital electrode has a much higher SNR than the electrode from the non-hair-bearing areas. The SNR of SSVEPs has been significantly improved after applying the CCA approach to multi-channel EEG data. The SNR increased as the number of electrodes involved in the CCA processing increased (as indicated by the blue solid line in Fig. 3). For all the subjects, the best combination of multiple electrodes from the non-hair-bearing areas reached an SNR comparable to the occipital electrode. In particular, three subjects (Subjects 2, 3 and 5) had SNRs of non-hair SSVEPs even higher than those of the occipital electrode. All subjects reached comparable SNRs by using the optimal occipital electrode and a combination of 10 non-hair-bearing electrodes. For Subjects 2, 3, and 5, the SNR of the occipital electrode can be reached by using only 5 non-hair-bearing electrodes.

It has been shown that multi-channel EEG data of a few electrodes from the non-hair-bearing areas can achieve an SNR comparable to the occipital electrode. Therefore, a multi-channel electrode placement over the non-hair-bearing area could be used to realize an SSVEP-based BCI system. Fig. 4 shows the electrode placement with the highest SNR when using 10 electrodes. For all the subjects, the 10 optimal electrodes covered multiple non-hair-bearing areas, all contributing to the improvement of the SNR of SSVEPs. This electrode setup has the potential to result in many practical BCI applications.

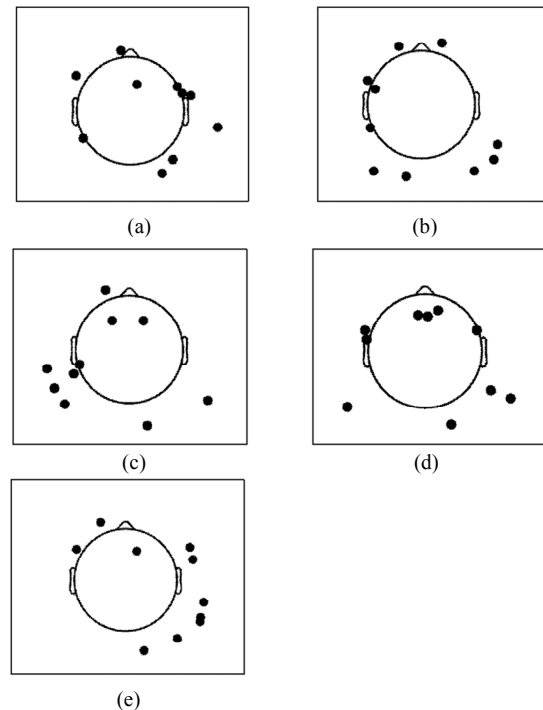


Figure 4. Electrode positions of the best combination of 10-electrode setups for each of the 5 subjects ((a)-(e) correspond to Subject 1-5). The black dots indicate the electrode locations over the non-hair areas.

IV. CONCLUSION AND DISCUSSION

SSVEP based BCI applications have attracted a lot of attention recently. However, to our best knowledge, no study

has systematically compared the SNR of SSVEPs measured from hair-covered and non-hair-bearing areas. The study showed that, across the five subjects, EEG recordings from non-hair-bearing areas, including face, neck, and behind the ear areas, could reliably measure SSVEPs. Generally speaking, the rank of the SNR was the occipital area > behind-the-ear > neck area \approx face area. A lower SSVEP SNR obtained from the neck and face areas might be attributed to the contamination from the muscle activity to those areas.

The comparison between hair-covered and non-hair-bearing area showed that the quality of SNR was depended on the electrodes selections. As shown in Fig. 3, the SNR of non-hair-bearing SSVEPs of Subject 3 matched well with that of the reference channel by using only two electrodes. The same situation applied to Subjects 2 and 5. These results indicated that, if an optimal non-hair electrode combination could be known in advance, one can achieve the comparable SNR of SSVEP by using electrodes placed on the non-hair-bearing areas and the occipital area.

Using laboratory-oriented EEG setups for real-world SSVEP BCI applications is known to be impractical for routine use. An alternative approach to obtain informative EEG signals over no-hair-bearing sites is thus highly desirable. The results of this study demonstrated the feasibility of using the proposed non-hair-bearing montage for measuring SSVEP, which we believe might significantly improve the practicality of BCI systems in real-life environments. If the proposed apparatus proves feasible in other BCI practices, a much wider range of applications of BCI will emerge.

REFERENCES

- [1] J. R. Wolpaw, N. Birbaumer, D. J. McFarland, G. Pfurtscheller, and T. M. Vaughan, "Brain-computer interfaces for communication and control," *Clinical Neurophysiology*, vol. 113, no. 6, pp. 767 – 791, 2002.
- [2] G. Bin, X. Gao, Z. Yan, B. Hong, and S. Gao, "An online multi-channel SSVEP-based brain-computer interface using a canonical correlation analysis method," *Journal of Neural Engineering*, vol. 6, no. 4, 2009.
- [3] Y. -T. Wang, Y. Wang, and T. -P. Jung, "A Cell-phone based Brain Computer Interface for Communication in Daily Life", *Journal of Neural Engineering*, vol.8, no.2, pp. 1-5, 2011.
- [4] M. Cheng and S. Gao, "An EEG-based Cursor Control System." *IEEE BMES/EMBS conference*, vol.1, 1999.
- [5] M. Cheng, X. Gao, S. Gao, and D. Xu, "Design and implementation of a brain-computer interface with high transfer rates," *IEEE Trans. on Biomed. Eng.* vol.10, pp. 1181-1186, October 2002.
- [6] Y. Wang, R. Wang, X. Gao, and S. Gao, "Brain-computer interface based on the high-frequency steady-state visual evoked potential.", *Proceeding of IEEE Neural Interface and Control*, pp. 37-39, 2005.
- [7] S.P. Kelly, E.C. Lalor, R.B. Reilly, J.J. Foxe, "Visual spatial attention tracking using high-density ssvpe data for independent brain-computer communication," *IEEE Trans. on Neural Systems and Rehab. Eng.*, vol.13, pp. 172-178, 2005.
- [8] X. Gao, D. Xu, M. Cheng, and S. Gao, "A BCI-based environmental controller for the motion-disabled," *IEEE Trans. on Neural Systems and Rehab. Eng.*, vol. 11, no. 2, pp. 137-140, 2003.
- [9] K. -K. Shyu, P. -L. Lee, M. -H. Lee, M. -H. Lin, R.-J. Lai, and Y. -J. Chiu, "Development of a Low-Cost FPGA-Based SSVEP BCI Multimedia Control System," *IEEE Trans. on Biomed. Circuits Syst.* vol.4, pp. 125-132, April 2010.
- [10] C. Grozea, C. D Voinescu, and S. Fazli, "Bristle-sensors Low-cost Flexible Passive Dry EEG Electrodes for Neurofeedback and BCI Applications," *Journal of Neural Engineering*, vol.8, no.2, pp. 1-5, 2011.
- [11] Y. M. Chi, Y. -T. Wang, Y. Wang, C. Maier, T. P. Jung, G. Cauwenberhs, "Dry and Don-contact EEG Sensors for Mobile Brain-Computer Interfaces," *IEEE Trans. on Neural Syst. And Rehab. Eng.* vol.20, pp. 228-235, March 2012.
- [12] C. -T. Lin, L. -D. Liao, Y. -H. Liu, I -J. Wang, B. -S. Lin, and J. -Y. Chang, , "Novel Dry Polymer Foam Electrodes for Ling-Term EEG Measurement," *IEEE Trans. on Biomed. Eng.* vol.58, pp. 1200-1207, May 2011.
- [13] J.-C. Chiou, L.-W. Ko, C.-T. Lin, C.-T. Hong, T.-P. Jung, S.-F. Liang, and J.-L. Jeng, "Using novel mems eeg sensors in detecting drowsiness application," in *Biomedical Circuits and Systems Conference, 2006. BioCAS 2006. IEEE*, Nov. 2006, pp. 33 –36.
- [14] Y. Wang, Y. -T. Wang, and T. -P. Jung, "Visual stimulus design for high-rate SSVEP BCI", *Electronics Letters*, vol.46, no. 15, pp. 1057-1058, 2010.