



Sloan-Swartz Centers for Theoretical Neurobiology Annual Summer Meeting 2007

July 28-July 31, 2007

 University of California, San Diego

The entire program will be at Eucalyptus Point at UCSD, unless otherwise noted.
Nearby parking will be available.

Saturday July 28

6:00 PM Opening Reception at UCSD Mandeville Suite on the 11th floor of Tioga Hall

Sunday July 29

8:00 AM **Breakfast**

8:55 AM Welcome – Scott Makeig (UCSD)

Olfaction, Taste, Audition and Timing – Larry Abbott (Chair)

9:00 AM Jin Wang (UCSD)

“Visualizing the olfactory circuit in Drosophila.”

9:45 AM Glenn Turner (CSHL)

“Sparse olfactory representations by Drosophila mushroom body Kenyon cells”

10:00 AM Adi Rangan (NYU)

“Olfactory coding & recognition”

10:15 AM Gidon Felsen (CSHL)

“A neural circuit for decision-making in rats.”

10:30 AM **Coffee break**

11:00 AM Paul Miller (Brandeis)

“Stochastic transitions between discrete attractor states in a model taste-processing network”

11:15 AM Alfredo Fontanini (Brandeis)

“Dynamic causal relationships between different cortical areas during taste perception”

11:30 AM Donald Katz (Brandeis)

“Sequences of coherent cortical states and the processing of sensory information”

11:45 AM Tatyana Sharpee (Salk)

“Two dimensional encoding in the songbird auditory forebrain and its possible function”

12:00 PM Tony Zador (CSHL)

“Auditory Cortex: From Synapses to Behavior”

12:15 PM Ruadhan O'Flanagan (Salk)

“Judgment”

12:30 PM **Lunch on site**

Decision Making and Motor Systems – Eve Marder (Chair)

- 2:00 PM Cori Bargmann (Rockefeller)
"Dissecting a circuit for probabilistic behavior in *C. elegans*."
- 2:45 PM Greg Stephens (Princeton)
"Dynamics and dimensionality in the behavior of *C. elegans*"
- 3:00 AM Gasper Tkacik (Princeton)
"Information flow and optimization in transcriptional control"
- 3:15 PM Alex Koulakov (CSHL)
"Lognormal distribution in cortical networks: A tale of two tails."
- 3:30 PM **Coffee break**
- 4:00 PM Bijan Pesaran (NYU)
"Relative position codes in the dorsal premotor cortex"
- 4:15 PM Daeyeol Lee (Yale):
"Prefrontal cortex and economic decision making"
- 4:30 PM Philip Eckhoff (Princeton)
"Diffusion processes with variable drift rates as models for decision making during learning"
- 4:45 PM Mark Laubach (Yale)
"Medial prefrontal cortex and the temporal control of action"
- 5:00 PM Chung-Chuan Lo (Yale)
"A spiking neural network model of inhibitory control for countermanding task"

Monday July 30

8:00 AM **Breakfast**

Neural Circuits and Optimization - William Bialek (Chair)

- 9:00 AM Adrienne Fairhall (University of Washington)
"Single neuron computation"
- 9:45 AM Andrea Hasenstaub (Salk)
"Fast spiking inhibitory neurons"
- 10:00 AM David McCormick (Yale)
"Implications of combined analogue/digital signaling in local cortical networks"
- 10:15 AM Yi Sun (NYU)
"Numerical analysis of network dynamics of HH neurons"
- 10:30 AM **Coffee break**
- 11:00 AM Joe Snider (Salk)
"Self-similarity of arbors"
- 11:15 AM Yuriy Mishchenko (CSHL)
"Automated large scale reconstruction of neural circuits using electron microscopy"
- 11:30 AM Santiago Jaramillo (CSHL)
"Selective coding in neural systems"
- 11:45 AM Steve Lisberger (UCSF)
"Noise reduction and addition in sensory-motor processing"

- 12:00 PM Jayant Kulkarni (Columbia)
"Common-noise models for multiple neural spike-train data"
- 12:15 PM Larry Abbott (Columbia)
"Something about neural network dynamics..."
- 12:30 PM **Lunch on site**

Vision – Christof Koch (Chair)

- 2:00 PM John Reynolds (Salk)
"Mapping the microcircuitry of attention: attentional modulation varies across cell classes in visual area V4"
- 2:45 PM Josh Milstein (Caltech)
"Dynamic moment analysis of the extracellular electric field of a biologically realistic spiking neuron"
- 3:00 PM Ping Wang (Salk)
"Synchronous thalamic inputs drive cortical neurons reliably when excitatory and inhibitory inputs are balanced"
- 3:15 PM Samuel Burns (NYU)
"A Time-Frequency Analysis of Phase Coherence in the Gamma Band of the Local Field Potential in V1"
- 3:30 PM **Coffee break**
- 4:00 PM Gergő Orbán (Brandeis)
"The link between neural activity in V1 and optimal probabilistic inference"
- 4:15 PM József Fiser (Brandeis)
"Do we develop visual representations based on pair-wise statistics of the visual scene?"
- 4:30 PM Arnulf Graf (NYU)
"Decoding population responses of visual neurons in macaque cortex"
- 4:45 PM John Rinzel (NYU)
"Competitive network models of binocular rivalry"
- 5:00 PM Marina Brozovic (Caltech)
"Gain mechanisms for contextually guided visuomotor transformations"
- 5:15 PM **Group Barbeque, Powerhouse Park in Del Mar**
There will be a shuttle service to Powerhouse Park. Shuttle stop location TBD.

Tuesday July 31

- 8:00 AM **Breakfast**

Plasticity, Learning and Memory - Michael Stryker (Chair)

- 9:00 AM Misha Tsodyks (Weizmann Institute)
"Ongoing dynamics of memory representations of morphed patterns"
- 9:45 AM Surya Ganguli (UCSF)
"Origins of short term memory traces in neural networks"
- 10:00 AM Samat Moldakarimov (Salk)
"A spiking network model implementing representational sharpening exhibits perceptual priming"

- 10:15 AM Matthias Kaschube (Princeton)
 "Self-organization in the development of neural circuitry"
- 10:30 AM **Coffee break**
- 11:00 AM Vladimir Itskov (Columbia)
 "From Spikes to Space: Building up space from hippocampal spikes alone"
- 11:15 AM Sen Cheng (UCSF)
 "Dynamics of spatial memory formation in the hippocampus"
- 11:30 AM Yuri Debaghian (UCSF)
 "Topological organization of information encoding in hippocampus"
- 11:45 AM Evren Tumer (UCSF)
 "Adaptive plasticity in the adult bird song system"
- 12:00 AM Daniel Ben Dayan Rubin (Columbia)
 "Retrieving noise-based memories by reading heterogeneous neurons"
- 12:30 PM **Lunch on site**
Director's Lunch – location TBA

Attention and Brain Imaging - Xiao-Jing Wang (Chair)

- 2:00 PM Jonathan Victor (Cornell Medical Center, NYC)
 "Information-theoretic analysis of sensory coding: Why it is challenging, and ways to make progress"
- 2:45 PM James Mazer (Yale):
 "Attentional modulation of feature selectivity in area V4"
- 3:00 PM Angela Yu (Princeton)
 "A Bayesian framework for dynamic attention selection"
- 3:15 PM Stefano Fusi (Columbia)
 "The importance of neural diversity in complex cognitive tasks"
- 3:30 PM **Coffee break**
- 4:00 PM Chess Stetson (Caltech)
 "Cumulative conditional probability encoded by neural blood flow"
- 4:15 PM Rey Ramirez (UCSD)
 "Neuroelectromagnetic source imaging of cortical traveling waves using frequency-domain independent vector analysis (IVA) and geodesic sparse Bayesian learning (gSBL)"
- 4:30 PM Jason Palmer (UCSD)
 "Advanced signal models for EEG/MEG analysis: Piecewise stationarity and dependent subspaces"
- 4:45 PM Julie Onton (UCSD)
 "Exploring spectral instability in EEG data"
- 5:00 PM Terry Sejnowski (Salk/UCSD)
 Closing Remarks

Conference Details

Location

The 2007 Annual Summer Meeting will be held on the campus of UC San Diego
University of California San Diego
9500 Gilman Drive
La Jolla, CA 92093

The entire program will be held at UCSD's Eucalyptus Point unless otherwise noted.
Eucalyptus Point is located on the west side of campus in Thurgood Marshall College.

Directions to Eucalyptus Point

To Eucalyptus Point from apartments: Directional signage will be provided.

Shuttle from Sheraton: There will be a **shuttle** provided.

Driving Directions from Sheraton Hotel to UCSD Campus:

Head out on Holiday Ct. toward Villa La Jolla Dr.
Turn right at Villa La Jolla Dr.
Turn left at La Jolla Village Dr.
Turn right at Muir College Dr.
Turn right at Parking Lot P207

Travel

By air:

San Diego is serviced by **San Diego International Airport** (SAN), also known as Lindbergh Field.

Directions to UCSD: UCSD can be a difficult campus to navigate for those who are unfamiliar. If you plan on driving, taking a shuttle or taxi, please use these explicit directions and maps. There will be signage on campus to supplement the directions provided.

Driving to UCSD from San Diego International Airport (14.1 miles, about 23 minutes):

Head west toward N Harbor Dr.
Turn right at N Harbor Dr.
Turn right at Laning Rd.
Turn right at Rosecrans St.
Slight left to stay on Rosecrans St.
Continue on Camino Del Rio W
Take the ramp onto I-5 N
Take exit 28B for La Jolla Village Dr.
Turn left at La Jolla Village Dr.
Turn right at Muir College Dr.
Turn right into parking lot P207

Driving to Sheraton La Jolla from San Diego International Airport (12.3 miles, about 19 minutes):

Head west toward N Harbor Dr.
Turn right at N Harbor Dr.
Turn right at Laning Rd.
Turn right at Rosecrans St.
Slight left to stay on Rosecrans St.
Continue on Camino Del Rio W
Take the ramp onto I-5 N
Take exit 28B for La Jolla Village Dr.
Head north on Exit 28B toward La Jolla Village Dr.
Turn left at La Jolla Village Dr.
Turn left at Villa La Jolla Dr.
Turn left at Holiday Ct.

Shuttles to and from the airport are complimentary for the attendees staying at the Sheraton. They run between 6am and 10pm. You will need to call the Sheraton and let them know your arrival time (858) 453-5500. You can schedule your shuttle back to the airport at the front desk.

The taxi fare from the airport to UCSD will be around \$40.00.

Accommodation & Checking In

The on campus housing, the Marshall lower apartments is located in Thurgood Marshall College, adjacent to the meeting facility, Eucalyptus Point.

Check-in:

The directions provided will take you to a location close to the check-in desk (parking lot P207), not the actual apartments. There will be signage to direct you from the check-in desk to the apartments. The check-in desk is located at Tioga Hall, room E-1.

Check-in is from noon to 5:00 pm on Saturday, July 28 at the Muir Conference Desk map. At check-in you will receive a conference packet of printed materials and information for the meeting, as well as your key and ID card. There will be a waiver included that must be signed and turned in on Sunday, July 29.

Check-out:

On the morning of your check-out time, place your key on the coffee table, otherwise you will be charged a \$60 lost-key fee.

Check-out time is before 11:00 am at the Muir Conference Desk on July 31. It is recommended to check out before the Tuesday program begins, as the Muir Conference Desk is about a 7-minute walk from Eucalyptus Point.

If you are checking out on August 1, you must check out by 8:00 am.

Sheraton:

The invited speakers will be staying at the Sheraton La Jolla, across from the south side of campus.

Invited Speakers can check in at the Sheraton at any time, and upon checking in will receive a conference packet of materials and information for the meeting, including instructions and directions on how to get to UCSD for the opening reception and the meeting.

Parking

There will be reserved parking for Sloan-Swartz Annual Summer Meeting attendees located in the parking lot P207 west of Eucalyptus Point for the entirety of the meeting.

There will be a shuttle in the morning to UCSD from the hotel, as well as one back to the Sheraton in the evening. The shuttle stop location is directly east of the parking lot and it will run from the Sheraton to UCSD from 7:30 to 8:30 am and from 5:15 to 6:15 pm.

Internet

Wireless Internet will be available on the UCSD campus. A username and password for access will be provided in your conference packet.

Dining

Breakfast and lunch are provided at the meeting, and will be served at Eucalyptus Point. Dinner will be provided on Monday, July 30. There will be hors d'oeuvres at the opening reception on Saturday, July 28, as well. There is no dinner provided on Sunday, July 29 or Tuesday, July 31

There is dinner provided for the attendees staying in the on campus apartments on July 29 and July 31, as well as breakfast on 8/1. Dinner is from 5:30 - 6:30 pm and breakfast is from 7:30 - 8:30 am. The meals are served at Sierra Summit in John Muir College.

A list of local restaurants is included in your Welcome packet.

Shuttles

There will be a shuttle on July 28 for the opening reception running from the Sheraton to UCSD from 5:30 to 6:30 pm and back to the Sheraton at 9:15 pm.

There will be shuttles to and from the Sheraton for those staying there. The Sheraton shuttle will pick up outside the lobby every morning at 7:30 am and run continuously until 8:30 am.

The shuttle from UCSD to the Sheraton will pick up at the shuttle stop every day at 5:15 and run continuously until 6:15 pm except on Monday, July 30.

There will be shuttles for the dinner beach bbq on Monday, July 29 in Del Mar. The shuttles will pick attendees up on campus after the daily program ends and transport them to Powerhouse Park.

Pick up the shuttle at stop #4 located on the [UCSD Shuttle Stop Map](#).

Opening Reception

The conference begins with a reception in the Mandeville Suite in Tioga Hall, John Muir College. The reception begins at 6pm and will have hors d'oeuvres and fantastic views of the sunset and the pacific from the eleventh floor suite and patio.

There will be signage to the event from the on campus housing, the parking lot and the shuttle stop (where those staying at the Sheraton will be dropped off). Once you get to Tioga Hall, go inside the front doors and take the elevators in the lobby to the eleventh floor. Exit the elevators and turn left. The Mandeville Suite is on the left end of the corridor (south side of the building).

Beach BBQ

On Monday, July 30, there will be a group outing to Del Mar for a beach BBQ from 6:00 to 8:30 pm. The "California Cuisine" menu includes grilled chicken breast, grilled Hawaiian mahi-mahi, smoked tri-tips of beef and veggie kabobs. There will be entertainment, as well as lawn games.

There will be shuttles to and from the event. The shuttles will pick attendees up on campus after the daily program ends and transport them to Powerhouse Park.

Using The UCSD Wireless Network

Before You Start

1. You must know your network username and password. This information is printed on the back of your name tag.
 2. Configure your Windows/Macintosh computer or PDA to use the UCSD wireless network.
-


Logging On To The UCSD Wireless Network

1. From an on-campus location with wireless coverage, launch your Web browser and try connecting to a Web site.
2. Before your browser connects to the non-UCSD site, it will redirect to the UCSD Wireless page. If your browser does not redirect automatically, type **http://login.ucsd.edu** into the address bar. Depending on your browser's security features, you may be required to answer some questions. Please answer yes to them.

Vernier Secure Login

https://wireless-cs2.ucsd.edu

Getting Started Latest Headlines



You are not logged on.

This wireless service is not secure. You must protect sensitive transmissions, including passwords, with additional encryption using SSL, SSH, or VPN.

Enter your UCSD.EDU Network username and password. These are the same username and password that you would use for UCSD dialin or proxy service.

You may also enter a UCSD Wireless guest username and password which can be obtained at department and conference offices around campus.

Registered Users

Username:

Password:

Copyright © 2001-2005 Vernier Networks, Inc. All rights reserved.

Done wireless-cs2.ucsd.edu

3. Enter your username and password as directed.
4. Press the *Logon User* button.
5. Your browser will log on to the UCSD wireless network and connect to the non-UCSD Web site you entered in step 1.
6. If UCSD affiliates with permanent network usernames and passwords use the network at least once every 30 days, their wireless authorization will last one year. Users with UCSD guest access must reauthorize more frequently.

Configuring Your Personal Digital Assistant (PDA) To Use The UCSD Wireless Network

Use the following information to configure your PDA. If you need additional help, visit ACS/Network Operations (AP&M Building, room 1313, Monday - Friday 8 AM - 4:30 PM).

- Network name/SSID: UCSD
- Mode: Infrastructure
- Encryption: disabled

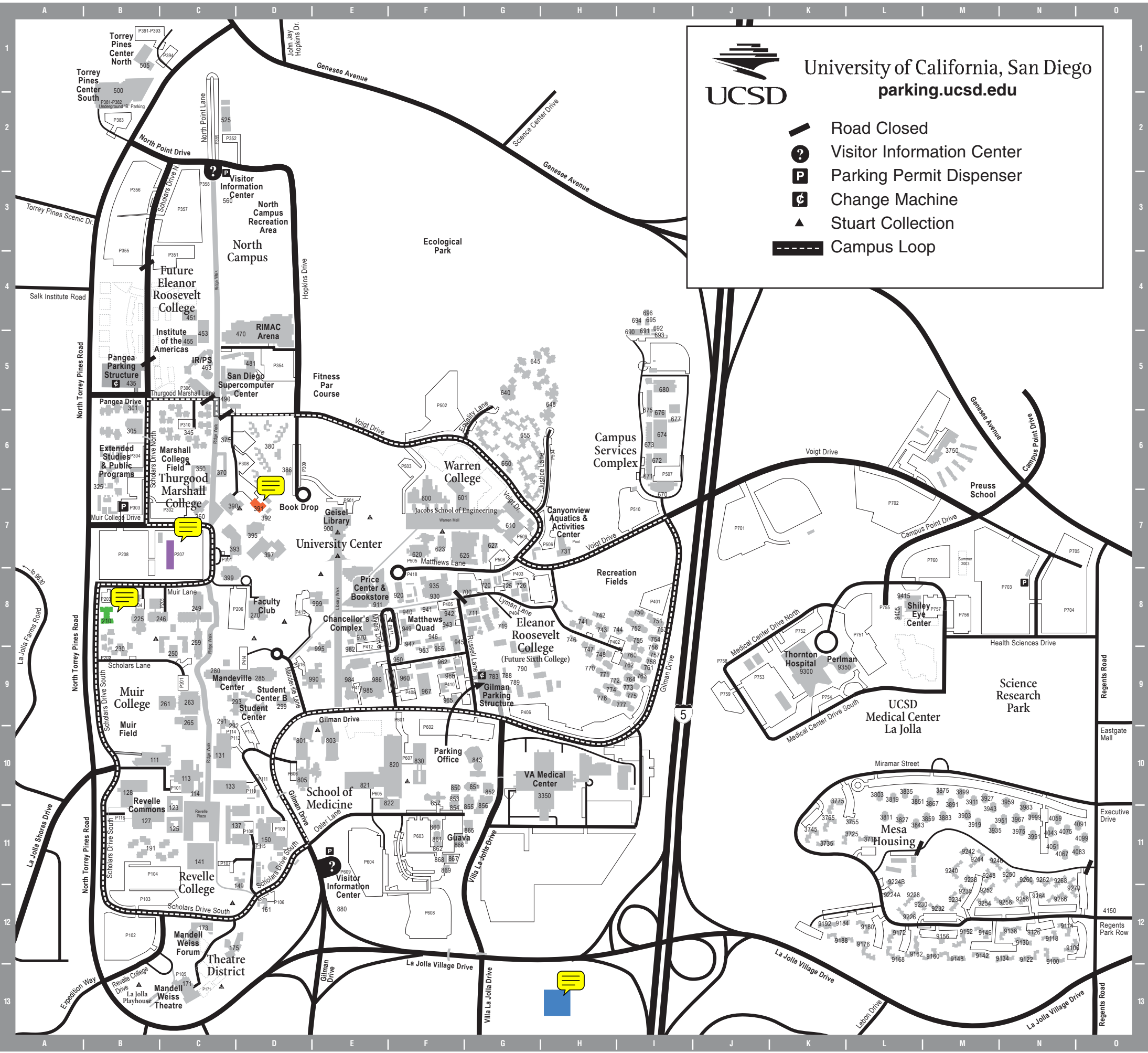
Questions

If you have any further questions or encounter problems while attempting to connect to the UCSD network, send an e-mail message to acs-help@ucsd.edu or call (858) 534-3227.



University of California, San Diego
parking.ucsd.edu

- Road Closed
- Visitor Information Center
- Parking Permit Dispenser
- Change Machine
- Stuart Collection
- Campus Loop



Structures

982 Academic Senate (214–215 University Center) . . .	E8
960 Admissions — Undergraduate (301 University Center) . . .	F9
249 Applied Physics and Mathematics Building . . .	C8
125 Argo Hall . . .	C11
850 Ash . . .	F10
820 Basic Science Building . . .	F10
853 Beech . . .	F10
259 Biology Building . . .	C8
821 Biomedical Library . . .	E10
123 Blake Hall . . .	C10
131 Bonner Hall . . .	C10
985 Building 202, University Center . . .	E9
986 Building 201, University Center . . .	E9
670–677 Campus Services Complex16
967 Cancer Research Facility (303 University Center) . . .	F9
640 Canyon Vista Administration Building . . .	G5
731 Canyonview Aquatics and Activities Center . . .	H7
995 Career Services Center . . .	E8
854 Cedar (Clinical Research) . . .	F10
803 Cellular and Molecular Medicine East (CMME) . . .	E10
801 Cellular and Molecular Medicine West (CMMW) . . .	D10
620 Center for Magnetic Recording Research . . .	F7
805 Center for Molecular Genetics Building . . .	D10
945 Center for Research in Computing and the Arts (408 University Center) . . .	F8
984 Center Hall . . .	E9
150 Central Utilities Plant . . .	D11
970 Chancellor's Complex (104–112 University Center) . . .	E8
161 Che Cafe (food) . . .	D12
393 Chemistry Research Building . . .	C7
865 Clinical Research Facility . . .	G11
857 Club Med (food) . . .	F10
397 Cognitive Science Building . . .	D7
455 Copley International Conference Center . . .	C5
292 Crafts Center . . .	C9
720 Cross Cultural Center . . .	G8
860 Date . . .	F11
9224 Early Childhood Education Center . . .	L12
370 Economics Building . . .	C6
949 Eleanor Roosevelt College Administration (412 University Center) . . .	F8
790 Eleanor Roosevelt College Residence Halls (Africa, Asia, Earth, Europe, Latin America, Middle East, North America, Oceania) . . .	G9
600 Engineering-I . . .	F6
610 Engineering-II . . .	G7
391 Eucalyptus Point Conference Center . . .	D7
680 Environmental Management Facility . . .	J5
861 Evergreen . . .	F11
270 Faculty Club, Ida and Cecil Green . . .	D8
862 Fir . . .	F11
386 Fireside Lounge . . .	D6
191 Fleet Housing (Atlantis, Beagle, Challenger, Discovery, Galathea, Meteor) . . .	C11
141 Galbraith Hall . . .	C11
900 Geisel Library . . .	E7
451 Gildred Latin American Studies Building . . .	C4
783 Gilman Parking Structure . . .	G9
291 Grove Gallery . . .	C9
866 Guava . . .	F11
999 Health Center, Student . . .	E8
700 High Bay Physics Laboratory . . .	F8
867 Holly . . .	F11
250 Humanities and Social Sciences Building . . .	C8
453 Institute of the Americas Building . . .	C4
990 International Center . . .	D9
751 International House . . .	J8
868 Ivy . . .	F11
822 Keck Center for Functional Magnetic Resonance Imaging . . .	F11
627 Literature Building . . .	G7
263 Main Gymnasium . . .	C9
173 Mandell Weiss Forum . . .	C12
171 Mandell Weiss Theatre . . .	C13
285 Mandeville Center . . .	D9
743 Matthews Apartments . . .	H8
133 Mayer Hall . . .	D10
246 McGill Hall . . .	C8
390 Media Center/Communication Building . . .	C7
852 Medical Genetics Building . . .	G10
830 Medical Teaching Facility . . .	F10
3715–4083 Mesa Housing . . .	M11
9100–9270 Mesa Housing . . .	M11
261 Natatorium . . .	C9
128 Natural Sciences Building . . .	C9
305 OceanView Terrace (food) . . .	B6
4150 Orthopaedics, UCSD OrthoMed, Regents Park Row, Suite 300 (off Regents Rd.) . . .	O12
111 Pacific Hall . . .	C10
435 Pangea Parking Structure . . .	B5
741–777 Pepper Canyon Apartments . . .	H9
9350 Perلمان Ambulatory Care Center . . .	K9
399 Peterson Hall . . .	C9
601 Powell-Focht Bioengineering Hall . . .	F6
3750 Preuss School . . .	M6
911 Price Center . . .	E8
9405 Ratner Children's Eye Center . . .	L8
265 Recreation Gymnasium . . .	C9
149 Revelle College Administration Building . . .	D11
127 Revelle Commons . . .	C11
470 RIMAC — Recreation, Intramural and Athletics Complex . . .	D4

463 Robinson Building Complex — Graduate School of International Relations and Pacific Studies . . .	C5
481 San Diego Supercomputer Center . . .	D5
855 School of Medicine Building 1 . . .	G10
851 School of Medicine Building 2 . . .	G10
856 School of Medicine Building 4 . . .	G10
930 Science and Engineering Research Facility (SERF) . . .	F8
350 Sequoyah Hall . . .	C6
9415 Shiley Eye Center . . .	L8
965 Sixth College Administration Building (700 University Center) . . .	F9
490 Social Sciences Building . . .	C5
395 Solis Hall . . .	D7
525 Spanos Training Facility . . .	C2
843 Stein Clinical Research Building . . .	G10
935 Structural Components Laboratory, Charles Lee Powell . . .	F8
623 Structural Systems Laboratory, Charles Lee Powell . . .	F7
225 Stuart Commons . . .	B8
293 Student Center . . .	D9
299 Student Center, Building B . . .	D9
215 Tenaya Hall . . .	B8
9300 Thornton Hospital — The John M. and Sally B. Thornton Hospital . . .	K9
375 Thurgood Marshall Activities Center (TMAC) . . .	C6
360 Thurgood Marshall College Administration Building . . .	C7
380 Thurgood Marshall College Apartments I (Lowers) . . .	D6
345 Thurgood Marshall College Apartments II (Uppers) . . .	C6
301 Thurgood Marshall College Residence Halls . . .	B6
210 Tioga Hall . . .	B8
505 Torrey Pines Center North . . .	B1
500 Torrey Pines Center South . . .	B2
230 Tuolome Apartments . . .	B8
325 UCSD Extended Studies and Public Programs Complex . . .	B6
280 University Art Gallery . . .	C9
941–966 University Center . . .	F9
9630 University House (9630 La Jolla Farms Road) . . .	A10
113 Urey Hall . . .	C10
114 Urey Hall Addition . . .	C10
3350 Veterans Administration Medical Center . . .	G10
880 Visitor Information Center, Gilman Entrance . . .	E11
560 Visitor Information Center, North Point Entrance . . .	C3
711 Visual Arts Facility . . .	G8
175 Wagner Dance Building . . .	D12
648 Warren College Graduate Apartments (Bates, Brown) . . .	H5
645 Warren College Residence Halls (Frankfurter, Harlan, Stewart) . . .	G5
655 Warren College Undergraduate Apartments (Black, Brennan, Douglas, Goldberg) . . .	G6
625 Warren Lecture Hall . . .	F7
946 Women's Center (407 University Center) . . .	F8
137 York Hall . . .	D11

Structures (Numeric)

111 Pacific Hall . . .	C10
113 Urey Hall . . .	C10
114 Urey Hall Addition . . .	C10
123 Blake Hall . . .	C10
125 Argo Hall . . .	C11
127 Revelle Commons . . .	C11
128 Natural Sciences Building . . .	B10
131 Bonner Hall . . .	C10
133 Mayer Hall . . .	D10
137 York Hall . . .	D11
141 Galbraith Hall . . .	F11
149 Revelle College Administration Building . . .	D11
150 Central Utilities Plant . . .	D11
161 Che Cafe (food) . . .	D12
171 Mandell Weiss Theatre . . .	C13
173 Mandell Weiss Forum . . .	C12
175 Wagner Dance Building . . .	D12
191 Fleet Housing (Atlantis, Beagle, Challenger, Discovery, Galathea, Meteor) . . .	C11
210 Tioga Hall . . .	B8
215 Tenaya Hall . . .	B8
225 Stuart Commons . . .	B8
230 Tuolome Apartments . . .	B8
246 McGill Hall . . .	C8
249 Applied Physics and Mathematics Building . . .	C8
250 Humanities and Social Sciences Building . . .	C8
259 Biology Building . . .	C8
261 Natatorium . . .	C9
263 Main Gymnasium . . .	C9
265 Recreation Gymnasium . . .	C9
270 Faculty Club, Ida and Cecil Green . . .	D8
280 University Art Gallery . . .	C9
285 Mandeville Center . . .	D9
291 Grove Gallery . . .	C9
292 Crafts Center . . .	C9
293 Student Center . . .	D9
299 Student Center, Building B . . .	D9
301 Thurgood Marshall College Residence Halls . . .	B6
305 OceanView Terrace (food) . . .	B6
325 UCSD Extended Studies and Public Programs Complex . . .	B6
345 Thurgood Marshall College Apartments II (Uppers) . . .	C6
350 Sequoyah Hall . . .	C6
360 Thurgood Marshall College	

Administration Building . . .	C7
370 Economics Building . . .	C6
375 Thurgood Marshall Activities Center (TMAC) . . .	C6
380 Thurgood Marshall College Apartments I (Lowers) . . .	D6
386 Fireside Lounge . . .	D6
390 Media Center/Communication Building . . .	C7
391 Eucalyptus Point Conference Center . . .	D7
393 Chemistry Research Building . . .	C7
395 Solis Hall . . .	D7
397 Cognitive Science Building . . .	D7
399 Peterson Hall . . .	C8
435 Pangea Parking Structure . . .	B5
451 Gildred Latin American Studies Building . . .	C4
453 Institute of the Americas Building . . .	C4
455 Copley International Conference Center . . .	C5
463 Robinson Building Complex — Graduate School of International Relations and Pacific Studies . . .	C5
470 RIMAC — Recreation, Intramural and Athletics Complex . . .	D4
481 San Diego Supercomputer Center . . .	D5
490 Social Sciences Building . . .	C5
500 Torrey Pines Center South . . .	B2
505 Torrey Pines Center North . . .	B1
525 Spanos Training Facility . . .	C2
560 Visitor Information Center, North Point Entrance . . .	C3
600 Engineering-I . . .	F6
601 Powell-Focht Bioengineering Hall . . .	F6
610 Engineering-II . . .	G7
620 Center for Magnetic Recording Research . . .	F7
623 Structural Systems Laboratory, Charles Lee Powell . . .	F7
625 Warren Lecture Hall . . .	F7
627 Literature Building . . .	G7
640 Canyon Vista Administration Building . . .	G5
645 Warren College Residence Halls (Frankfurter, Harlan, Stewart) . . .	G5
648 Warren College Graduate Apartments (Bates, Brown) . . .	H5
655 Warren College Undergraduate Apartments (Black, Brennan, Douglas, Goldberg) . . .	G6
670–677 Campus Services Complex . . .	J6
680 Environmental Management Facility . . .	J5
700 High Bay Physics Laboratory . . .	F8
711 Visual Arts Facility . . .	G8
720 Cross Cultural Center . . .	G8
731 Canyonview Aquatics and Activities Center . . .	H7
743 Matthews Apartments . . .	H8
751 International House . . .	J8
741–777 Pepper Canyon Apartments . . .	H9
783 Gilman Parking Structure . . .	G9
790 Eleanor Roosevelt College Residence Halls (Africa, Asia, Earth, Europe, Latin America, Middle East, North America, Oceania) . . .	G9
801 Cellular and Molecular Medicine West (CMMW) . . .	D10
803 Cellular and Molecular Medicine East (CMME) . . .	E10
805 Center for Molecular Genetics Building . . .	D10
820 Basic Science Building . . .	F10
821 Biomedical Library . . .	E10
822 Keck Center for Functional Magnetic Resonance Imaging . . .	F11
830 Medical Teaching Facility . . .	F10
843 Stein Clinical Research Building . . .	G10
850 Ash . . .	F10
851 School of Medicine Building 2 . . .	G10
852 Medical Genetics Building . . .	G10
853 Beech . . .	F10
854 Cedar (Clinical Research) . . .	F10
855 School of Medicine Building 1 . . .	G10
856 School of Medicine Building 4 . . .	G10
857 Club Med (food) . . .	F10
860 Date . . .	F11
861 Evergreen . . .	F11
862 Fir . . .	F11
865 Clinical Research Facility . . .	G11
866 Guava . . .	F11
867 Holly . . .	F11
868 Ivy . . .	F11
880 Visitor Information Center, Gilman Entrance . . .	E11
900 Geisel Library . . .	E7
911 Price Center . . .	E8
930 Science and Engineering Research Facility (SERF) . . .	F8
935 Structural Components Laboratory, Charles Lee Powell . . .	F8
941–966 University Center . . .	F9
945 Center for Research in Computing and the Arts (408 University Center) . . .	F8
946 Women's Center (407 University Center) . . .	F8
949 Eleanor Roosevelt College Administration (412 University Center) . . .	F8
960 Admissions — Undergraduate (301 University Center) . . .	F9
965 Sixth College Administration Building (700 University Center) . . .	F9
967 Cancer Research Facility (303 University Center) . . .	F9
970 Chancellor's Complex (104–112 University Center) . . .	E8
982 Academic Senate (214–215 University Center) . . .	E8
984 Center Hall . . .	E9
985 Building 202, University Center . . .	E9
986 Building 201, University Center . . .	E9
990 International Center . . .	D9
995 Career Services Center . . .	E8
999 Health Center, Student . . .	E8
3350 Veterans Administration Medical Center . . .	G10

3715–4083 Mesa Housing . . .	M11
3750 Preuss School . . .	M6
4150 Orthopaedics, UCSD OrthoMed, Regents Park Row, Suite 300 (off Regents Rd.) . . .	O12
9224 Early Childhood Education Center . . .	L12
9100–9270 Mesa Housing . . .	M11
9300 Thornton Hospital — The John M. and Sally B. Thornton Hospital . . .	K9
9350 Perلمان Ambulatory Care Center . . .	K9
9405 Ratner Children's Eye Center . . .	L8
9415 Shiley Eye Center . . .	L8
9630 University House (9630 La Jolla Farms Road) . . .	A10

Academic Listings

843 AIDS Research Institute, Stein Clinical Research Building . . .	G10
843 Academic Geriatric Resource Center, Stein Clinical Research Building . . .	G10
490 Anthropology Department, Social Sciences Building . . .	C5
601 Bioengineering Department, Powell-Focht Bioengineering Hall . . .	F6
805 Biology, Cell & Developmental Biology Section, Center for Molecular Genetics . . .	D10
259 Biology, Ecology, Behavior, & Evolution Section, Biology Building . . .	C8
111 Biology, Molecular Biology Section, Pacific Hall . . .	C10
111 Biology, Neurobiology Department, Pacific Hall . . .	C10
930 CASS — Center for Astrophysics and Space Sciences, Science and Engineering Research Facility (SERF) . . .	F8
453 CCIS — Center for Comparative Immigration Studies, Institute of the Americas Building . . .	C4
610 CER — Center for Energy Research, Engineering-II . . .	G7
246 CHIP — Center for Human Information Processing, McGill Hall . . .	C8
451 CILAS — Center for Iberian and Latin American Studies, Gildred Latin American Studies Building . . .	C4
133 CIMS — Center for Interface and Materials Science, Mayer Hall . . .	D10
805 CMG — Center for Molecular Genetics, CMG Building . . .	D10
620 CMRR — Center for Magnetic Recording Research, CMRR Building . . .	F7
820 CRBS — Center for Research in Biological Structure, Basic Science Building . . .	F10
945 CRCA — Center for Research in Computing and the Arts, CRCA Building . . .	F8
490 CREATE — Center for Research in Educational Equity, Assessment, and Teaching Excellence, Social Sciences Building . . .	C5
397 CRL — Center for Research in Language, Cognitive Science Building . . .	D7
453 CUSMS — Center for U.S.–Mexican Studies, Institute of the Americas Building . . .	C4
600 CWC — Center for Wireless Communications, Engineering-I . . .	F6
866 Cancer Center Administration, Guava . . .	F11
967 Cancer Research Facility (303 University Center) . . .	K9
9350 Cardiology, Perلمان Ambulatory Care Center . . .	K9
801 Cellular and Molecular Medicine, CMM West . . .	D10
114 Chemistry and Biochemistry Department, Urey Hall Addition . . .	C10
397 Cognitive Science Department, Cognitive Science Building . . .	D7
390 Communication Department, Media Center/Communication Building . . .	C7
249 Computer Science and Engineering Department, Applied Physics and Mathematics Building . . .	C8
370 Economics Department, Economics Building . . .	C6
600 Electrical and Computer Engineering Department, Engineering-I . . .	F6
490 Ethnic Studies Department, Social Sciences Building . . .	C5
860 Family and Preventive Medicine Department, Date . . .	F11
9350 Family Medicine, Perلمان Ambulatory Care Center . . .	K9
250 History Department, Humanities and Social Sciences Building . . .	C8
801 Howard Hughes Medical Institute, CMM West . . .	D10
463 IGCC — Institute for Global Conflict and Cooperation, Robinson Building Complex . . .	C5
820 IMM — Institute for Molecular Medicine, Basic Science Building . . .	F10
397 INC — Institute for Neural Computation, Cognitive Science Building . . .	D7
620 INLS — Institute for Nonlinear Science, CMRR . . .	F7
113 IPAPS — Institute for Pure and Applied Physical Sciences, Urey Hall . . .	C10
463 International Relations and Pacific Studies (IR/PS), Graduate School of, Robinson Building Complex . . .	C5
600 Jacobs School of Engineering, Engineering-I . . .	F6
726 LCHC — Laboratory for Comparative Human Cognition (517 University Center, 2nd floor) . . .	G8
246 Linguistics Department, McGill Hall . . .	C8
627 Literature Department, Literature Building . . .	G7
249 Mathematics Department, Applied Physics and Mathematics Building . . .	C8
610 Mechanical and Aerospace Engineering Department, Engineering-II . . .	G7
9350 Medicine and Subspecialties, Perلمان Ambulatory Care Center . . .	K9
856 Molecular Medicine, School of Medicine Building 4 . . .	G10
285 Music Department, Mandeville Center . . .	D9
114 Natural Sciences, Dean's Office, Urey Hall Addition . . .	C10

9350 Neurology, Perلمان Ambulatory Care Center . . .	K9
855 Neurosciences Department, School of Medicine Building 1 . . .	G10
9415 Ophthalmology, Shiley Eye Center . . .	L8
820 Pathology Department, Basic Science Building . . .	F10
9350 Pediatrics, Perلمان Ambulatory Care Center . . .	K9
820 Pharmacology Department, Basic Science Building . . .	F10
9350 Pharmacy, Perلمان Ambulatory Care Center . . .	K9
250 Philosophy Department, Humanities and Social Sciences Building . . .	C8
114 Physical Sciences, Dean's Office, Urey Hall Addition . . .	C10
114 Physics Department, Urey Hall Addition . . .	C10
490 Political Science Department, Social Sciences Building . . .	C5
820 Psychiatry Department, Basic Science Building . . .	F10
246 Psychology Department, McGill Hall . . .	C8
9350 Radiology, Perلمان Ambulatory Care Center . . .	K9
9350 Reproductive Medicine, Perلمان Ambulatory Care Center . . .	K9
9405 Retina/Glaucoma Research Facility . . .	L8
481 San Diego Supercomputer Center . . .	D5
985 School of Pharmacy (202 University Center) . . .	E9
490 Sociology Department, Social Sciences Building . . .	C5
843 Stein Institute for Research on Aging, Stein Clinical Research Building . . .	G10
930 Structural Engineering Department, Science and Engineering Research Facility (SERF) . . .	F8
726 Teacher Education Program (517 University Center) . . .	G8
141 Theatre and Dance Department, Galbraith Hall . . .	C11
490 Urban Studies and Planning, Social Sciences Building . . .	C5
285 Visual Arts Department, Mandeville Center . . .	D9
930 WIBE — Whitaker Institute for Biomedical Engineering, Science and Engineering Research Facility (SERF) . . .	F8

Administration

982 Academic Senate (215 University Center) . . .	E8
970 Chancellor (107 University Center) . . .	E8
627 Dean, Arts and Humanities, Literature Building . . .	G7
114 Dean, Biological Sciences, Urey Hall Addition . . .	C10
600 Dean, Jacobs School of Engineering, Engineering-I . . .	F6
820 Dean, School of Medicine, Basic Science Building/Administrative Wing . . .	F10
490 Dean, Social Sciences, Social Sciences Building . . .	C5
325 Dean, University Extension, UCSD Extended Studies and Public Programs Complex . . .	B6
949 Provost, Eleanor Roosevelt College, ERC Administration (412 University Center) . . .	F8
250 Provost, Muir College, Humanities and Social Sciences Building . . .	C8
149 Provost, Revelle College, Revelle College Administration Building . . .	D11
965 Provost, Sixth College, Sixth College Administration Building (700 University Center) . . .	F9
360 Provost, Thurgood Marshall College, TMC Administration Building . . .	C7
627 Provost, Warren College, Literature Building . . .	G7
970 Senior Vice Chancellor, Academic Affairs (105 University Center) . . .	E8
970 Vice Chancellor, Business Affairs (110 University Center) . . .	E8
970 Vice Chancellor, External Relations (108B University Center) . . .	E8
820 Vice Chancellor, Health Sciences, Basic Science Building . . .	F10
970 Vice Chancellor, Research (105 University Center) . . .	E8
970 Vice Chancellor, Resource Management and Planning (109 University Center) . . .	E8
970 Vice Chancellor, Student Affairs (112 University Center) . . .	E8

Food

640 Canyon Vista . . .	G5
161 Che Cafe . . .	D12
857 Club Med . . .	F10
640 Earl's Place . . .	G5
225 El Mercado . . .	B8
270 Faculty Club, Ida and Cecil Green . . .	D8
293 Food Co-op, Student Center . . .	D9
911 Food Court, Price Center . . .	E8
293 Grove Cafe, Student Center . . .	D9
225 Muir Woods, Stuart Commons . . .	B8
305 OceanView Terrace . . .	B6
225 P.O.P. (Muir Sundry Store), Stuart Commons . . .	B8
127 Plaza Cafe, Revelle Commons . . .	C11
293 Porter's Pub, Student Center . . .	D9
225 Sequoia Room, Stuart Commons . . .	B8
225 Sierra Summit, Stuart Commons . . .	B8
127 Why Not Here?, Revelle Commons . . .	C11

Libraries

900 Art and Architecture, Geisel Library . . .	E7
821 Biomedical Library . . .	E10
141 Center for Library and Instructional Computing Services (CLICS), Galbraith Hall . . .	C11
900 Geisel Library . . .	E7
463 International Relations and Pacific Studies Library . . .	C5
900 Science and Engineering, Geisel Library . . .	E7

Student and Visitor Services

940 Academic Enrichment Program (411 University Center) . . .	F8
725 Admissions — Graduate (520 University Center) . . .	G8
830 Admissions — School of Medicine, Medical Teaching Facility . . .	F10
960 Admissions — Undergraduate (301 University Center) . . .	F9
985 Alumni Relations (202 University Center) . . .	E9
627 Academic Internship Program, Literature Building . . .	G7
911 Associated Students, Price Center . . .	E8
911 Bookstore, UCSD, Price Center . . .	E8
911 Box Office, Price Center . . .	E8
911 Campus Tours, Price Center . . .	E8
950 Cashier (401 University Center) . . .	F9
225 Cloud's Rest Commuter Lounge, Stuart Commons . . .	B8

Local Restaurants

Chipotle Mexican Grill –

8657 Villa La Jolla Dr, La Jolla, CA
(858) 554-1866 -

Islands Restaurant

3351 Nobel Dr, La Jolla, CA
(858) 455-9945 -

California Pizza Kitchen –

3363 Nobel Dr, La Jolla, CA
(858) 457-4222 -

Elijah's Restaurant Delicatessen
Bakery Catering –

8861 Villa La Jolla Dr, La Jolla, CA
(858) 455-1461 -

TGI Friday's –

8801 Villa La Jolla Dr, La Jolla, CA
(858) 455-0880 -

Humphrey's La Jolla Grill

3299 Holiday Ct, La Jolla, CA
(858) 452-4000

El Torito Mexican Grill –

8910 Villa La Jolla Dr, La Jolla, CA
(858) 453-4115

Daphne's Greek Cafe –

8657 Villa La Jolla Dr # 105, La Jolla,
CA
(858) 623-6940 -

Flame Broiler –

8867 Villa La Jolla Dr, La Jolla, CA
(858) 587-8989 -

Yummy Maki Yummy Box –

3211 Holiday Ct # 101A, La Jolla, CA
(858) 587-9848 -

Hyatt Regency La Jolla at Aventine

3777 La Jolla Village Drive, San
Diego, Californi

Georges At The Cove

1250 Prospect Street La Jolla, CA
92037 (858) 454-

Royal Thai Cuisine

737 Pearl Street La Jolla, CA 92037
(858) 551-THAI

Crab Catcher Restaurant and
Seaside Grille

1298 Prospect St. La Jolla, California
92037 (858)

Sante Ristorante

7811 Herschel Avenue La Jolla,
California 92037 Ph

The Marine Room

2000 Spindrift Dr La Jolla, CA 92037
(858) 459-722

Café Japengo

8960 University Center Lane San
Diego, CA 92122 (8

Delirio's California Cuisine

5721 La Jolla Blvd. (858) 456-5821
(closed Mondays)

Rock Bottom Restaurant and
Brewery

8980 Villa La Jolla Dr La Jolla, CA
92037

(858) 784-0519
M-F: 9AM-7PM, Sat: 10AM-5PM

B J's Chicago Pizzeria
8873 Villa La Jolla Dr. 858-455-0662

Shogun
(858) 453.0220
M-F: 11AM-6PM, Sat: 11:30AM-6PM

Schlotzsky's Deli
8657 Villa La Jolla Dr # 127 La Jolla,
CA 92037

Subway
(858) 458-0070
M-F: 8AM-8PM, Sat: 8AM-6PM

Piatti Ristorante & Bar
2182 Avenida De La Playa La Jolla,
Ca 92037 858-45

Tacone
(858) 558.4606
M-F: 10:30AM-5:30PM, Sat: 11AM-
3PM

Appolonaire (formerly Aesop's
Tables)

Espresso Roma Café
(858) 450-2141
M-F: 7AM-5PM

8650 Genesee Avenue Suite 106
San Diego, CA 92122

Sunshine Store
(858) 534-4248
M-F: 8AM-8PM, Sat: 8AM-6PM

P. F. Chang's
4540 La Jolla Village Drive San
Diego, CA 92122

WESTFIELD UTC SHOPPING MALL
<http://westfield.com/utc/dining/>

UCSD PRICE CENTER

Jamba Juice
(858) 622.2020
M-F: 8AM-6PM

Boudin's Sourdough Bakery & Café
(Restaurant)
(858) 453-1849

Panda Express
(858) 638-0106
M-F: 11AM-7PM, Sat: 11AM-3PM

Burger King (Food Court)
(858) 453-8058
Cinnabon (Food Court)
(858) 457-4343

Round Table Pizza
(858) 457-2060
M-F: 11AM-4PM

Cozymel's Coastal Mexican Grill
(Restaurant)
(858) 658-0480

Rubio's Fresh Mexican Grill

Great Gyros (Food Court)
(858) 452-7940

Hot Dog On A Stick
(Food Court)
(800) 321-8400

Le Petit Bistro (Food Court)
(858) 404-0831

Miami Grille (Restaurant)
(858) 552-0668

Peking Palace (Restaurant)
(858) 452-7500

Red Robin Gourmet Burgers
(Restaurant)
(858) 450-0343

Royal India Express
(Food Court)
(858) 453-5300

Sbarro's Italian Pizza Eatery
(Food Court)
(858) 455-1878

Steak Escape (Food Court)
(858) 638-8172

Tacone Wraps (Food Court)
(858) 450-1604

Teriyaki House
(Food Court)
(858) 453-8222



Sloan-Swartz Centers for Theoretical Neurobiology
Annual Summer Meeting 2007





Sloan-Swartz Centers for Theoretical Neurobiology
Annual Summer Meeting 2007

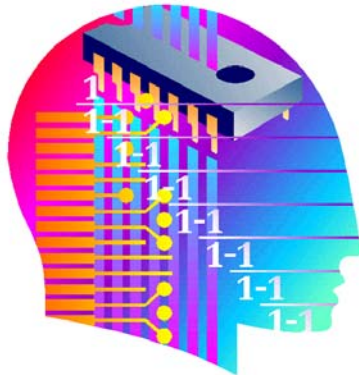




Sloan-Swartz Centers for Theoretical Neurobiology
Annual Summer Meeting 2007



The Swartz Foundation



To all conference speakers:

The Swartz Foundation would like to thank you for participating in this meeting.

We would also like to invite you to share your presentation with our web site audience.

After the meeting, please take a moment to send us your presentations, abstracts, videos, web links or other materials.

Go to this web page:

www.theswartzfoundation.org/uploads

If you have any questions or problems, please contact us at:

info@theswartzfoundation.org

or

516-857-1191